

## INTRODUCTION

Thank you very much for making a reservation at Bistro French & Lodge ChezDoudou.

We at ChezDoudou have been implementing various initiatives based on the guidelines of the GSTC (Global Sustainable Tourism Council), considering what we can do now as ChezDoudou.

We hope that our guests will be inspired to think a little about tourism and the environment so that Niseko will remain a beautiful tourist destination forever and snow will not disappear from this world.

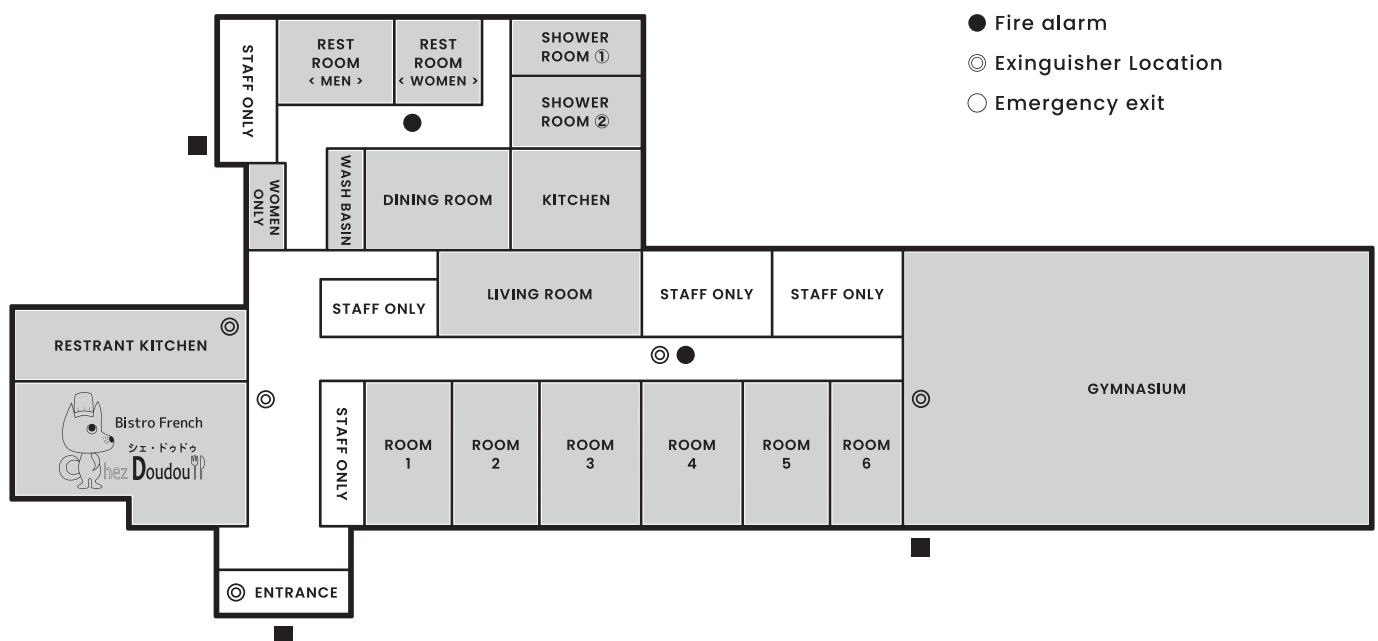
We have some small requests to keep our accommodation sustainable, but we are mindful of the comfort and pleasantness of our guests.

We also want to keep our room rates as low as possible by helping to reduce unnecessary energy and supplies costs.

If you have any questions, please do not hesitate to contact us.

We appreciate your understanding and cooperation.

# GUIDE MAP OF THE BUILDING



※ Please check each location after check-in in case of emergency.

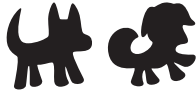
Other, the light switch in each room with red tape on it is an emergency light switch.  
Please do not use them under normal circumstances.

In case of emergency such as power failure at night, please press the switch from the top of the tape.



## CHECK - IN / CHECK OUT

- Check-in time is between 3:00 p.m. and 6:00 p.m.  
We will be ready and waiting for you according to the check-in time you have informed us in advance. Please let us know if there are any changes to the scheduled check-in time.
- Check-out time is please leave by 10:00 a.m.
- Please be sure to put the key in the white box provided at check-in and return it to the return rack at the entrance of the restaurant.
- During the winter season, please turn off the heating in your room before leaving.



## ABOUT THE ENTIRE FACILITY

- Hallways and communal areas (living room, kitchen, dining room, gymnasium) are to be used with shoes. The slippers at the entrance of the accommodation building are available for use as shoes.
- The hallways are equipped with sensor lights. Please do not touch the switches in the hallways as the lights will automatically turn off. Please turn off the lights in your room, bathroom, toilet, kitchen, and common areas when you leave or after your stay.
- There is no curfew. You are free to come and go as you please, even at night, however, **please be quiet when coming and going after 23:00 to avoid disturbing other guests sleeping.**
- Wi-Fi is available at [ **Chezdoudou\_Guest** ]. Please feel free to use.

### For Winter Guests

Each room and communal areas are heated, but some spaces, such as hallways, toilets and sinks, are not completely warm.

We ask for your cooperation in using the Warm Biz style in the hotel.

# ABOUT GUEST ROOMS

- **Each room is no footwear allowed.** Please remove your shoes or slippers at the entrance of your room. In winter, the floor may be cold, so we recommend that guests with sensitivity to cold bring their own room shoes or socks.
- Loud noise may echo to other rooms. **We ask for your cooperation in keeping quiet after 23:00.**
- The trash cans in your room are for burnable trash only. **Please separate cans, bottles, PET bottles, plastic, and food scraps in the communal kitchen.**
- Please refrain from eating in your room as much as possible, except for simple snacks and refreshments. Please use the communal areas for food and drinks, especially if you are in a large group.

## HEATING SYSTEM

- **Please keep the save or eco switch on at all times.** The system will operate normally until the temperature rises to plus 2°C Celsius above the set temperature. After that, the system will automatically turn off and start operating automatically when the temperature drops to the set point.
- When using the room, please set the temperature as you like.
- For sleeping, it is recommended to set the temperature at 13°C to 15°C.
- **When you are out of the room, especially when you will not be using the room for a long period of time, please set the temperature to 13°C.**

# ABOUT SHARED SPACES

Please observe the usage hours and directions for each space.

## LIVING ROOM, DINING ROOM (6:00-23:00)

Please use this room for meals and gatherings.

- **Please refrain from using the room with your companions who are not staying at the hotel without permission.**

Please be sure to consult with us in advance.

- If you use a fan heater during the winter,  
Please be sure to turn off the power when you leave the room.

## WASHING MACHINE

Washing machine usage fee ¥500 per time  
(with detergent)

- There is no dryer. We will lend you a hanger rack for drying clothes in your room.

## RESTROOMS

There are three private restrooms for both men and women.

- Restaurant customers only
- ① Lodge guests only
- ② Lodge guests only

- **We designate which toilet for you to use at the time of check-in.** (This is to avoid sharing with other groups and to reduce cleaning costs.) Please refrain from using any other toilet that are not designated for your use.

- Toilet slippers are available.

- This is a simple pumped toilet. All flushed water and paper will be charged at the pumping cost (at lodge's expense), so please do not flush more than necessary.

- **The toilet seat is heated during the winter. Please be sure to close the toilet seat lid after use to increase the heat retention effect.**

## SHOWER ROOM (6:00-22:30)

There are two shower rooms :

Shower Room ① and Shower Room ②

- **We will specify which shower room you can use when you check-in.** (In order to avoid sharing with other groups and to reduce cleaning costs.) Please refrain from using the shower rooms that are not designated.

- **No shoes are allowed in the shower rooms.** Please take off your shoes before entering the door.

- Shower is free of charge. **If you wish to fill the bathtub with hot water, there is a ¥500 charge.** If you wish to use the bathtub, please let us know at the time of check-in.

- There are no bath mats or bath towels provided. **Please bring your own or rent one.**

**Rental Bath mat ..... ¥130**

**Rental Bath towel .... ¥180**

- Shampoo rinse and body soap are provided.

- Please turn on the ventilation fan when using the room. **After use, please turn off the fan and leave the door open.**

- If you use an electric heater in winter, **please turn it off when you leave the shower room. Please do not use a timer.**

## WASH BASIN

Shared by all guests.

Women can also use the women-only area.

- We do not provide disposable amenities such as face towels and toothbrushes. **Please bring your own toothbrush.**

- We do have toothpaste available for your use.

- **Please use your own or rental towels** and help us reduce paper towel waste as much as possible.

- **Rental Face Towel .... ¥130**

- Plastic baskets in each room may be used to hold toiletries.

- Hair dryers are available. You can use it freely.



## KITCHEN (6:00-22:30)

- Please feel free to use the utensils and dishes in the kitchen. Please wash the utensils and dishes by yourself, **Please wipe them with the towel provided at check-in and put them back where you found them.**
- Please refrain from using the kitchen for deep frying or long stewing dishes.
- **When handling fire (when using iH heater) never leave the area when handling a fire.**  
There are many cases of people leaving the kettle while boiling water and forgetting to turn it off. This is quite dangerous, so please do not do this.
- Fully equipped with refrigerator, microwave, toaster. Please feel free to use the condiments provided (salt, pepper, soy sauce, ketchup, mayonnaise, oil, etc.).
- We can retail a small amount of food necessary for self-catering. **We ask for your cooperation in refraining as much as possible from buying food more than you need and leaving it as garbage.**
- After using the cooking table or the dining décor, **Please clean them lightly with the duster towel provided at check-in so that other guests can use them comfortably.**

## Request for Separation of Garbage

Please separate and dispose of your garbage in 4 places.

### ① Burnable trash

### ② Plastic trash

Only clean plastic trash is allowed. Please dispose of oily and dirty items in ①Burnable trash.

### ③ Bottles, cans, PET bottles

Please wash the inside of bottles, cans, and PET bottles lightly with water. Please dispose of caps and labels of PET bottles in ②Plastic Waste.

### ④ Food waste

Please do not put them in bags, but put them directly into the bucket. Paper items such as coffee and tea bags should be disposed of in ①Burnable Garbage.

In consideration of the environment, **we ask for your cooperation in not pouring oily substances into the kitchen sink as much as possible.**

We will clean up any leftover cup noodle soup or animal oil on dishes, so please do not hesitate to ask us for help.



**GYMNASIUM  
(7:30–22:00, piano use until 20:00)**

※ Not available in winter.

- Please put away all used playground equipment in its original place.
- Some part of the gymnasium is used for storage, so please be careful of collisions and other hazards.
- Children under elementary school age must be accompanied by an adult.
- Please refrain from eating and drinking in the gymnasium.
- If you are planning to hold a group event, please consult with us in advance.

**PLAYGROUND (7:00–22:00)**

This is a space where you can play freely.

- If you wish to have a barbecue or bonfire, please inquire in advance at the time of reservation.
- Please refrain from using firecrackers, fireworks that make noise, rocket fireworks, drones, and radio-controlled (flying) devices.
- Please refrain from making noise that may disturb neighbors.



# ABOUT BREAKFAST

Breakfast is not included in the room rate.  
If you wish to have breakfast, please make a reservation in advance.

● All ordered breakfast items are prepared the day before in the refrigerator in the communal kitchen and can be served at your leisure on the morning of your stay.

● You may toast bread and serve salads on your own.

● You may return your purchased breakfast dishes to the restaurant without washing them.

## MENU

### [ Breakfast set ]

- bread, cream cheese, jam, salad, boiled egg, coffee or orange juice ..... ¥1,200

### [ A la carte menu ]

- Thick sliced bread with butter ..... ¥250
- Bagel bread with cream cheese ..... ¥350
- Raisin bread with butter ..... ¥300
- Half a baguette with butter ..... ¥350
- Homemade jam ..... ¥250
- Bottled salad ..... ¥660
- Boiled egg ..... ¥150
- Coffee bag ..... ¥250
- Tea bags ..... ¥200
- Orange Juice ..... ¥200
- Apple Juice ..... ¥200

# ABOUT BISTRO FRENCH

The Bistro French restaurant offers a casual yet hearty menu of dishes and wines made with locally sourced ingredients.

- Dinner course from ¥5,500 per person.
- Those wishing to use the restaurant are required to make a reservation in advance. When making a reservation, please inform us of the date, time, number of people, and whether or not you have any food allergies or dislikes.
- Last minute reservations may not be accepted due to other reservations or availability of ingredients, so please contact us as soon as possible.

